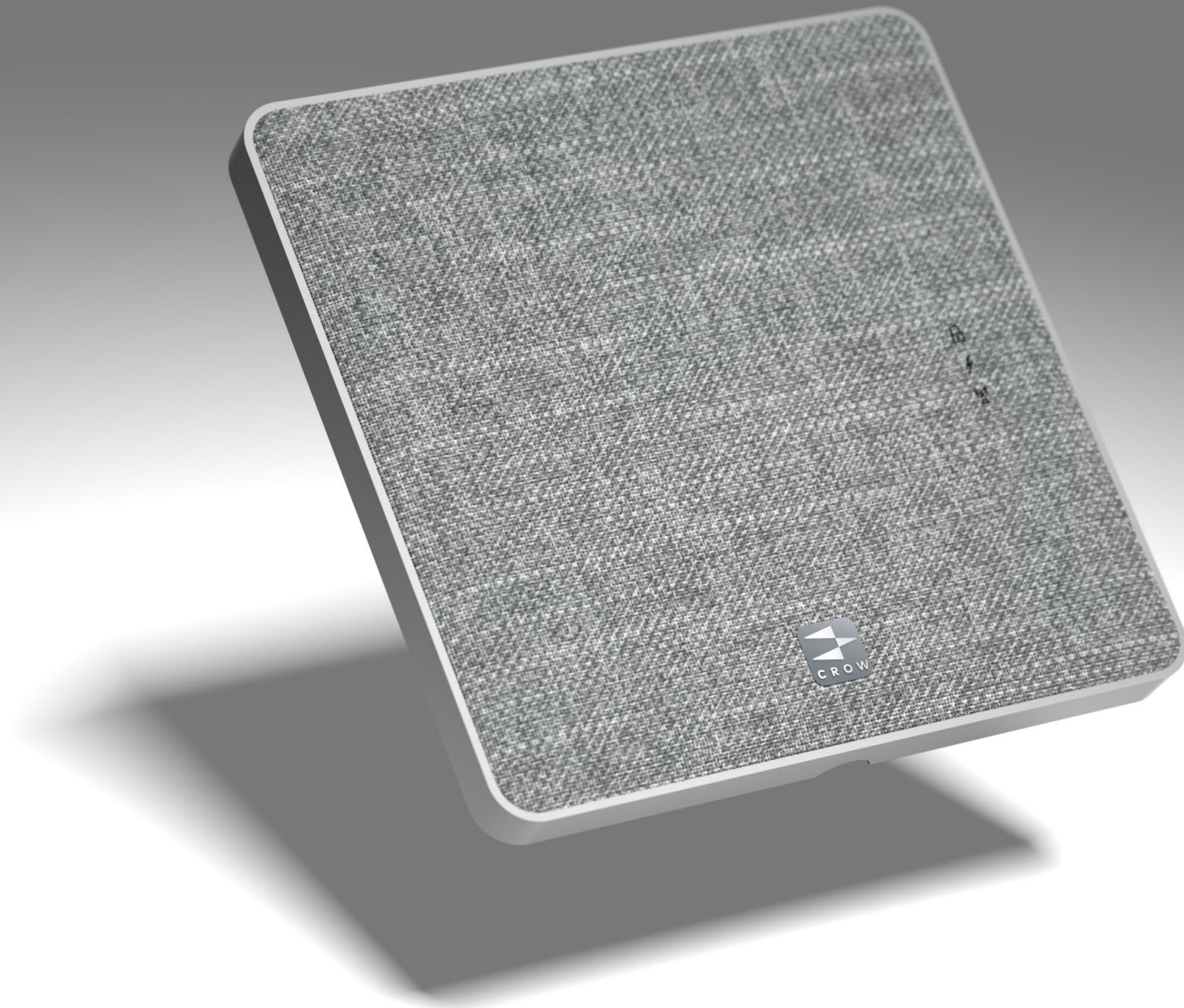


QUANTIX™

CROW 



QUANTIX™ stands at the heart of Crow's integrated Security, Safety and Elderly Care E2E solutions

# Table Of Content

1	QUANTIX
3	INTRO
5	COMMUNICATION
6	SIGNATURE
9	ESSENTIAL
11	OEM
13	SPEC
16	APPS
18	WEB
20	FABRIC
21	SECURITY
25	SAFETY
28	WIFI
29	SIGNALING
30	OTHERS
31	FOG
32	ACCESSORIES
33	EPILOGUE
34	ABOUT

## Crow - Where Experience meets Innovation since 1977

Leveraging decades of expertise and advanced technology, Crow is redefining security for today and tomorrow.

Since 1977, the Crow Group has delivered intelligent, high-performance solutions for residential and commercial environments offering a comprehensive portfolio of cutting-edge control panels and versatile wired and wireless peripherals that make homes and businesses safer and smarter.

Our solutions serve customers worldwide through a robust global network of distributors, professional installers and central monitoring stations.

Building on its long-standing leadership in security, Crow now combines deep expertise in artificial intelligence, video analytics and cloud technologies to offer next-generation solutions for Security, Monitoring, and Telecare.

## QUANTIX™ - The New Alarm Control Panel Shaped by Decades of Expertise

The **QUANTIX™ Alarm Control Panel** manages and supervises every device in the wireless security system ensuring seamless synchronization and peak performance.

Powered by Crow's proprietary military-grade, ultra low power, long-range RF protocol, **QUANTIX™** enables secure two-way communication with multi-layer encryption, frequency agility, anti-jamming capabilities, and full device authentication for maximum data protection.

The system continuously analyzes activity, identifies threats, filters false alarms, and delivers immediate alerts for genuine events. All communication channels are fully encrypted and authenticated to prevent spoofing, interference, or unauthorized access.

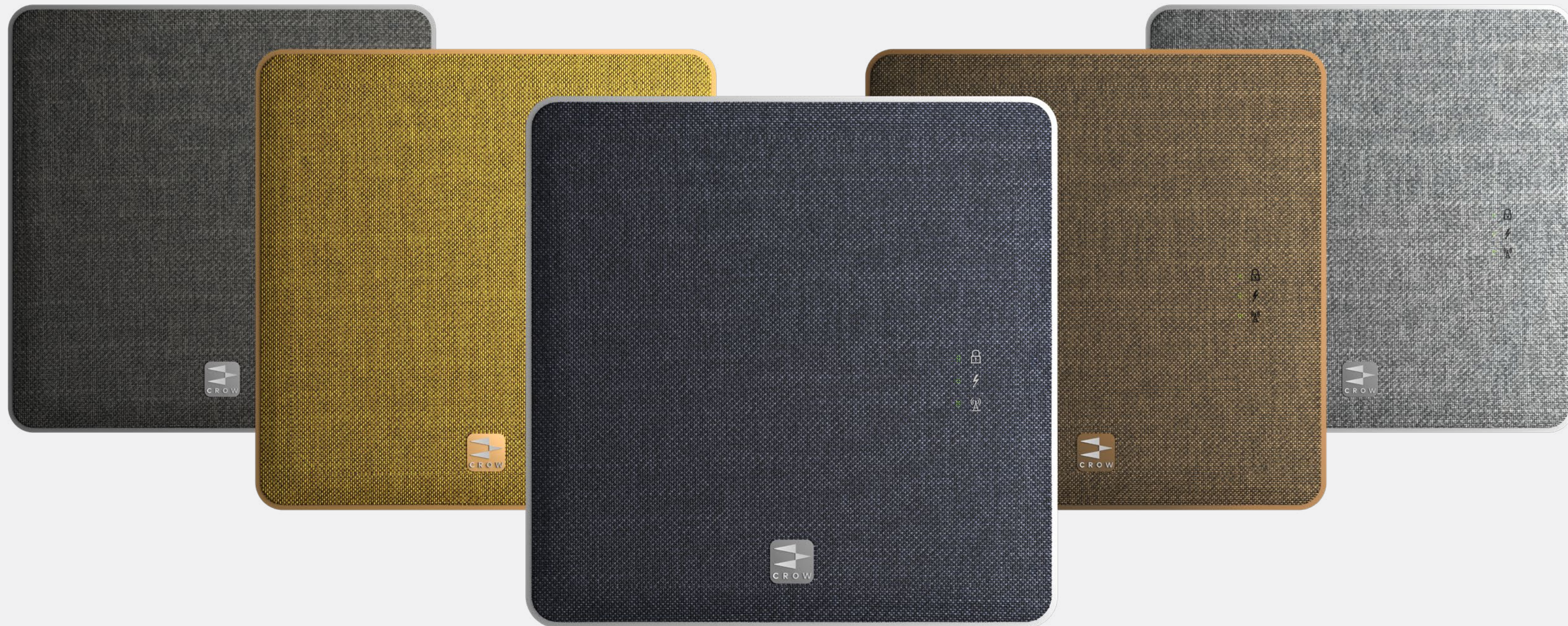
With integrated anti-tamper protection, redundant communication paths and a secure firmware architecture **QUANTIX™** ensures reliable, uninterrupted operation even in adverse conditions or under sabotage attempts.

## QUANTIX™ Communication

QUANTIX™ is Crow's newest panel, delivering the highest standards of reliability in data transmission through multiple encrypted communication paths and an advanced Cloud services suite.

- Smart, comprehensive portfolio for Security, Safety & Home Comfort devices.
- Fully integrated ecosystem with Smart Connected Home Devices and peripherals with extended lifetime.
- SOTA "Software Update Over-The-Air" for easy remote configuration, wireless equipment upgrades and testing.
- FOTA "Firmware Over-The-Air" for devices.
- Advanced diagnostic tools for optimal installation and configuration.
- Artificial Intelligence for detection and recognition.
- Outstanding Crow Cloud platform and Smart QUANTIX™ Apps.
- CMS/ARC Management Software support.
- Big Data transformed into Smart Data.
- Compatible with Amazon Alexa and Google Assistant for IoT voice activation.

## Quantix™ Signature Line Performance Meets Design



Available in a range of premium finishes, The **QUANTIX™** Signature Line provides a diverse palette of colors designed to complement and elevate any interior environment, ensuring a sophisticated aesthetic that seamlessly integrates with modern, contemporary, or classic design styles.

## Quantix™ Signature Line Where style evolves with your lifestyle



The **QUANTIX™** Signature Line offers interchangeable and easily replaceable fabric covers that blend effortlessly in high-end residential projects with minimalist or classic interiors.

QUANTIX™

CROW 





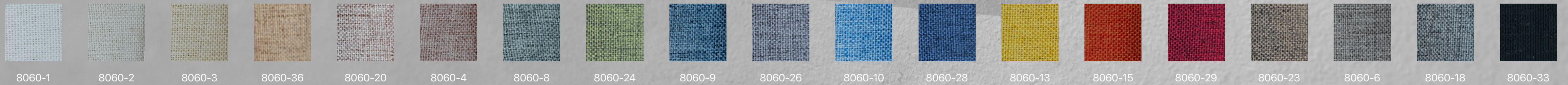
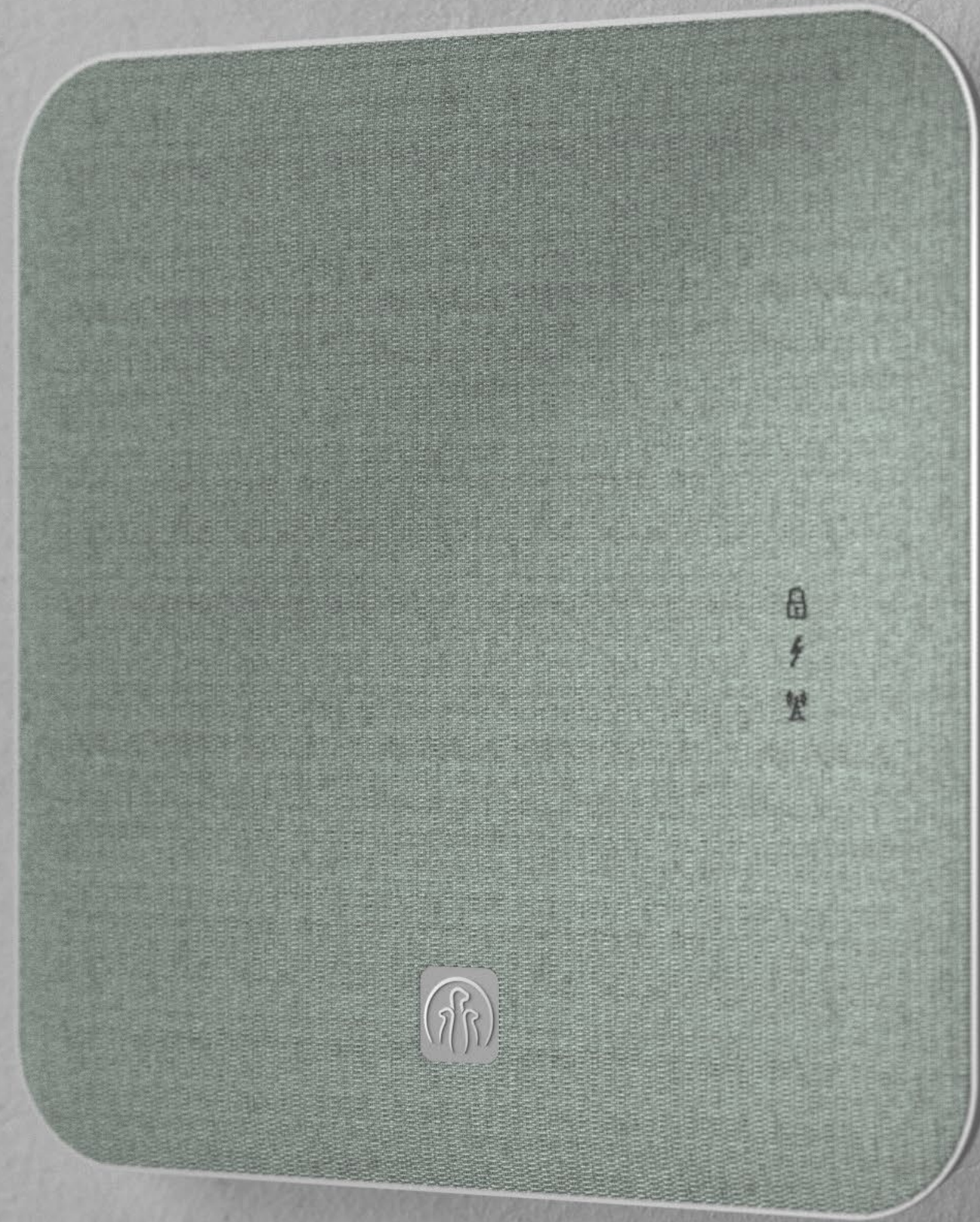
## Quantix™ Essential Line Reliable Security With Key Features

QUANTIX™ is also offered with core features in a durable white polymer enclosure ideal for high-volume commercial deployments. It delivers clean contemporary look and reliable performance.

QUANTIX™

CROW 





QUANTIX™ is also available in an OEM-customized configuration with a slimmer enclosure providing maximum integration flexibility within a sleek and modern design.

QUANTIX™

CROW 



### **Intelligent Power Backup**

High-efficiency integrated battery ensures uninterrupted operation during power outages keeping your security active at all times.

### **Robust Encryption**

Multi-layer encryption safeguards data and signal integrity, delivering unmatched reliability and confidentiality.

### **Ecosystem Compatibility**

Fully interoperable with the Crow portfolio for seamless expansion and unified device management.



### **Multi-Protocol Connectivity**

Supports ISM Sub-GHz, DECT, DECT ULE, Wi-Fi SIA-09 (ADM-CID/SIA-DCS), LTE, VoLTE as well as Zigbee or Matter.

### **Advanced System Architecture**

Manages up to 256 devices, 128 zones, 64 outputs, 64 users, and 8 audio devices enabling fast and coordinated system response.

### **Crow Cloud Integration**

Secure remote management, live alerts and OTA updates keep all devices connected via the Crow Cloud platform.

### **Certified Performance**

CE, EN 50131-3 Grade 2 Class II, EN50131-10 DP3 standards

## Communication

### Wi-Fi

Wi-Fi 6 (802.11ax) 2.4 GHz

### Cellular

LTE VoLTE Micro SIM & eSIM

### Zigbee\*

Certified Zigbee 3.0 with Matter available as an alternative.

### DECT\*

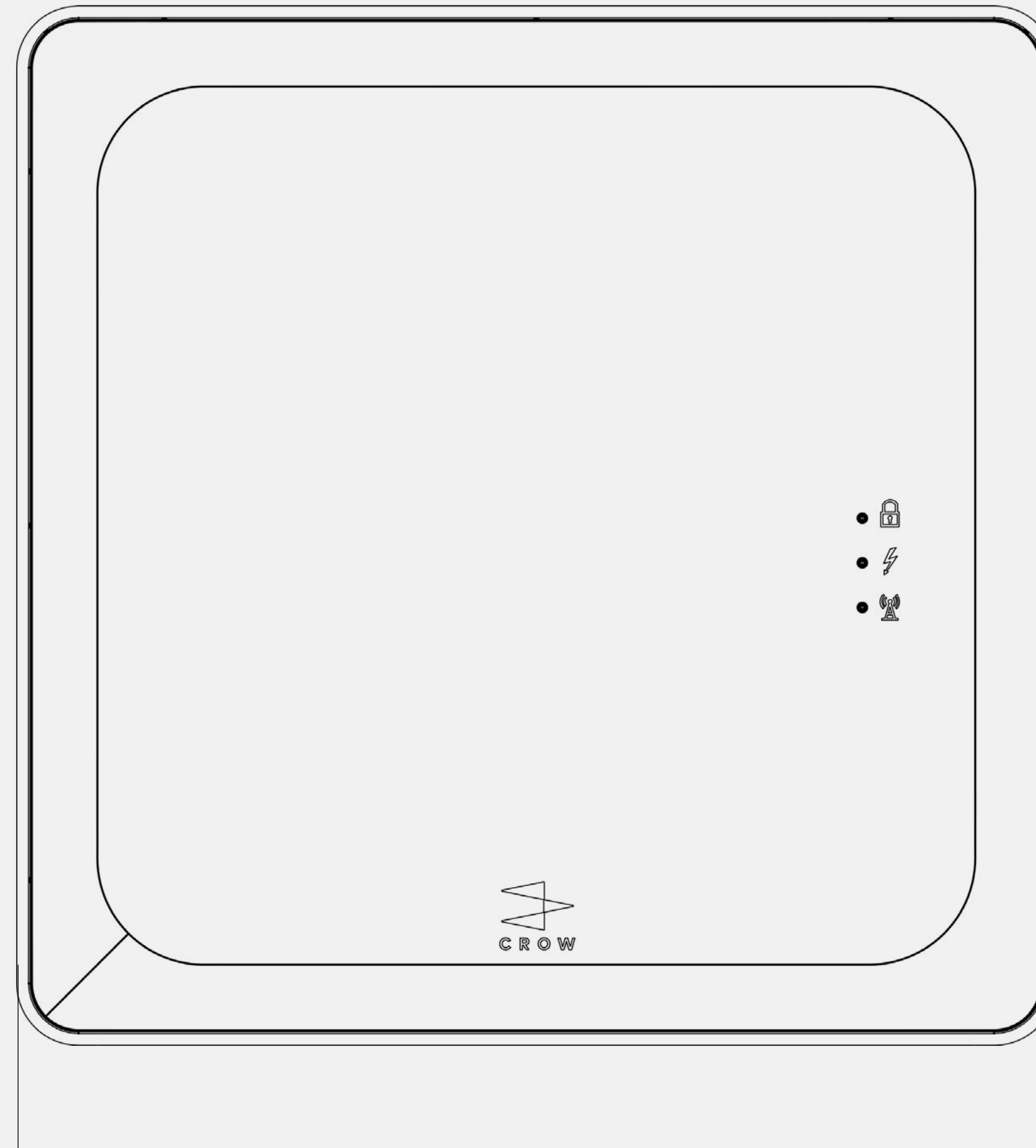
DECT-ULE and DECT, supporting up to 8 full-duplex audio channels (1.88–1.93 GHz, region dependent).

### Sub-GHz RF

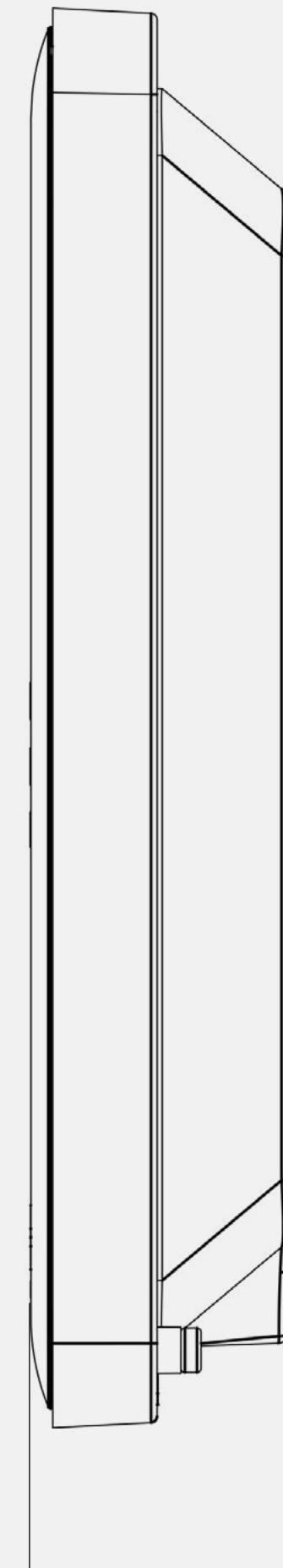
Proprietary Freewave2 two-way communication operating in the ISM bands 868–869 MHz and 902–928 MHz with LBT + AFA support. Delivers up to 20 dBm output power with advanced multilayer encryption.

Supports GFSK, OQPSK, and DSSS modulations.  
(Output power, modulation, and frequency comply with local regulation)

\* Only In QUANTIX Signature



176 mm / 6.93 In



32.6 mm / 1.28 In

## Security

### CMS Protocols

Crow Proprietary Protocol  
SIA DC-05/DC-09/DSC  
ADM-CID

### Report Channels

Up to 8 report channels: TCP/IP  
Wi-Fi, LTE, SMS

### Log Events

Local storage - 2000  
Cloud-configurable.

### Data Security

Multi-Layer Encryption  
TLS 1.2/1.3 with client authentication.  
AES128/256 FW integrity authentication.

### User Codes

Up to 128

### Tamper protection

wall and cover  
tamper protection

### Power Supply

DC 5.5v 1.6A Input  
100-240 VAC 50/60Hz

## Alarm

### Areas

4

### Zones

128 supervised and monitored zones  
with unique identifiers.

### Outputs

64

### Users

64

### Audio

8 Devices

### DEVICES

Up to 256

## Wired Interfaces

### RJ45

Ethernet base T10 /100 Base

### Debug & programing

All data interfaces are locked to prevent  
unauthorized external access.

## Power

### Battery / Battery Charger

Lithium-ion 3.7V 5500 mAh (20-hour backup)  
or optional 7200 mAh (24-hour backup)

## General

### Certification

CE , EN 50131-3 Grade 2 Class II  
EN 50131-10 DP3, RoHS 3, REACH.  
Pending: FCC Part 15, UL 1023  
UL 62368-1 (Residential Alarm System)

### Installation

Wall mounted

### Temperature

Operating: -10 °C to 55 °C, 14 °F to 131 °F  
Storage: -40 °C to 70 °C, -40 °F to 158 °F

### Weight

552 g (1.21 lb) Panel

### Package Size

230 X 230 x 40 mm, 9.06 X 9.03 X 1.58 Inches